



PreGate Parking Areas

Measure towards the control of port-approaching traffic

11.05.2011, Skellefteå



Project part-financed
by the European Union
(European Regional Development Fund)



Towards an integrated transport system in the Baltic Sea Region



Agenda

- I. Motivation and objectives
- II. Basic idea Pre-Gate-Parking (PGP)
- III. Operating strategies
- IV. Schedule and implementation



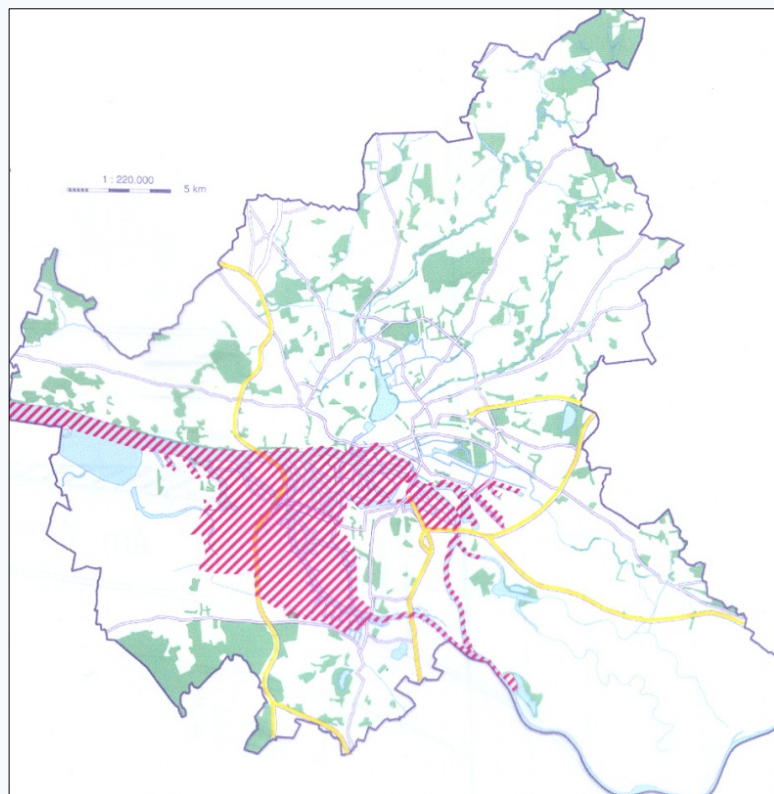
Project part-financed
by the European Union
(European Regional Development Fund)



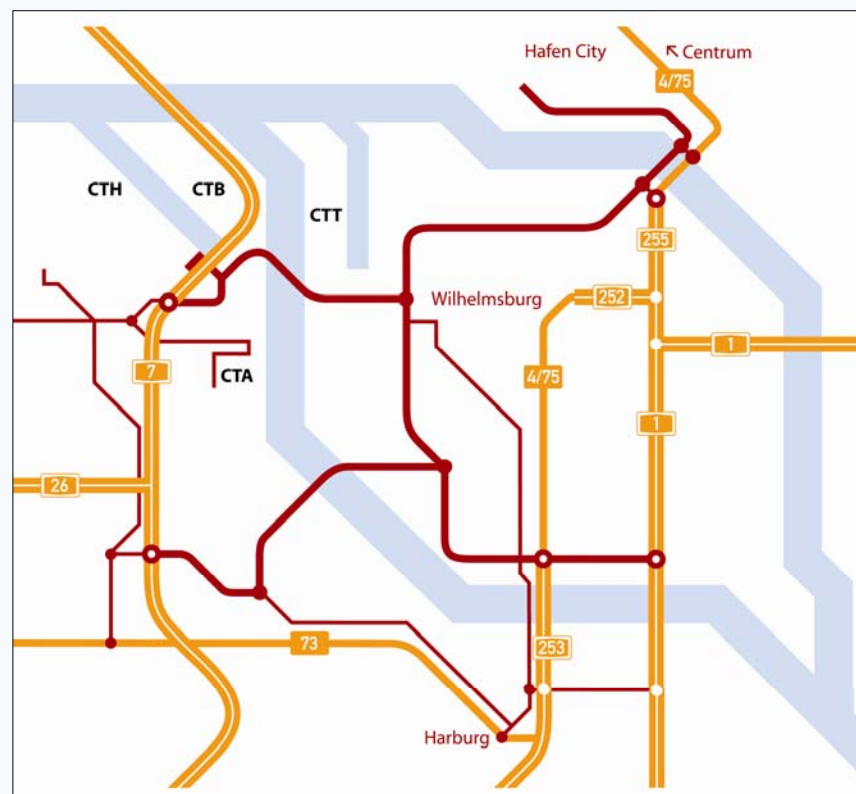
Towards an integrated transport system in the Baltic Sea Region



Spatial Situation



Port of Hamburg



Road Network



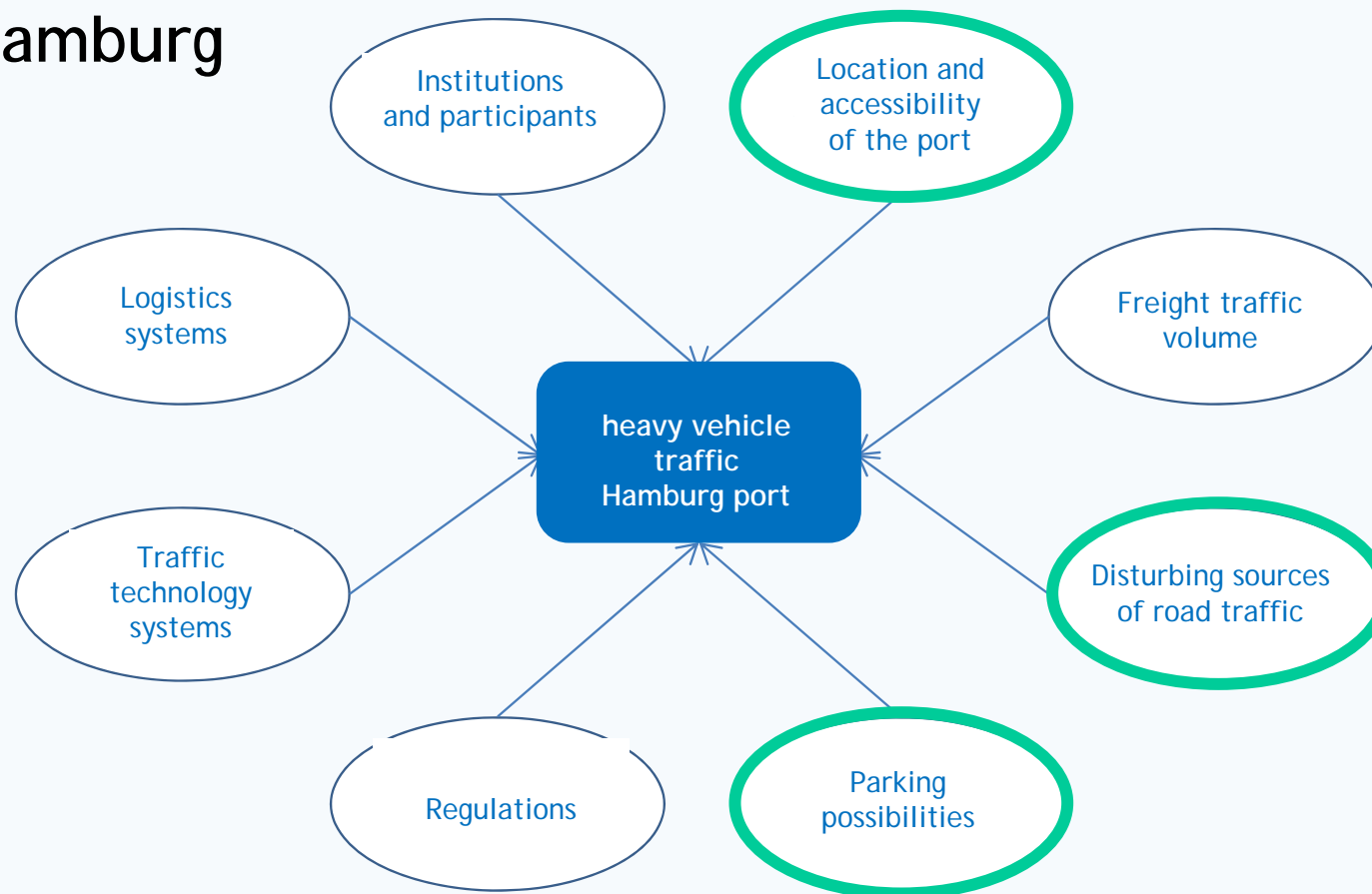
Project part-financed
by the European Union
(European Regional Development Fund)



Towards an integrated transport system in the Baltic Sea Region

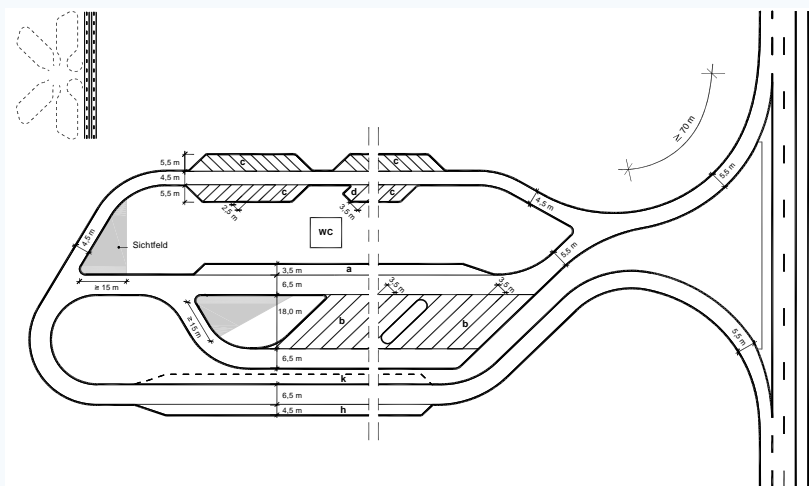


Basic conditions for heavy traffic in the port of Hamburg

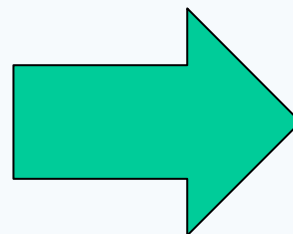




Basic idea Pre-Gate-Parking (PGP)



Use PreGateParking Area



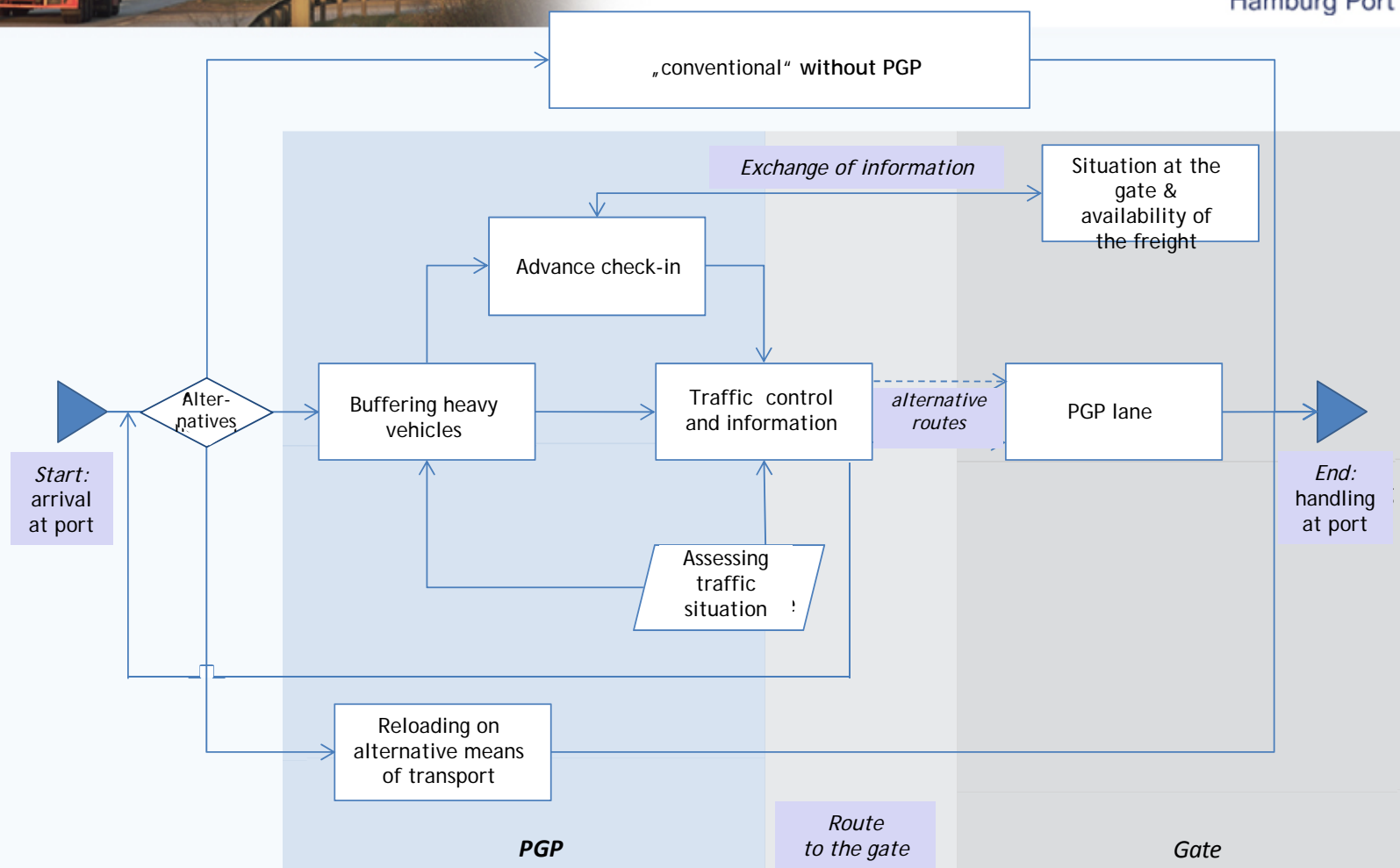
Go to Terminal



Use Fast Lane at Terminal



Topology of PGP





Operating strategies for PGP

Strategy C

PGP compulsive
for the Port of
Hamburg

Additional hub-
function for
container-
handling

Strategy B

PGP for
recommended
use

Additional
Approval of port
entry

Strategy A

PGP for Optional Use

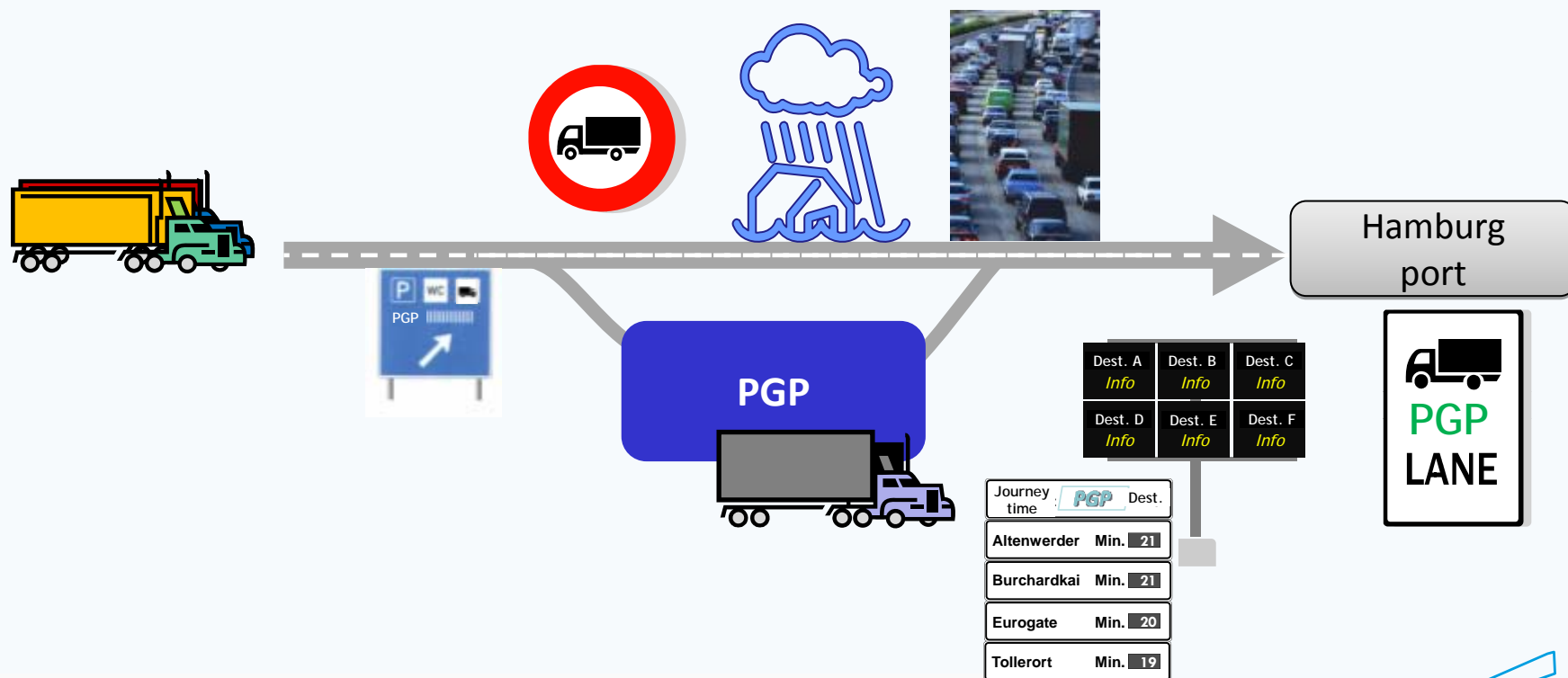
Providing Traffic
Information and Parking
Area



Project part-financed
by the European Union
(European Regional Development Fund)

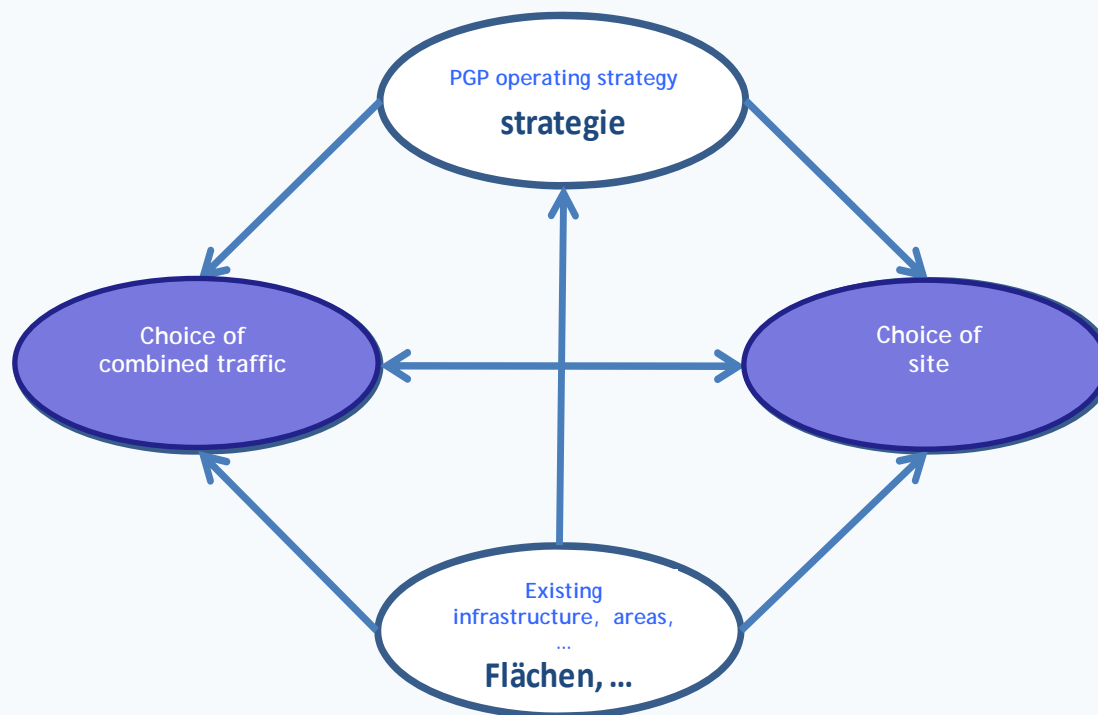


Operating strategy B: Recommended use in case of problems in traffic flow / other disturbances





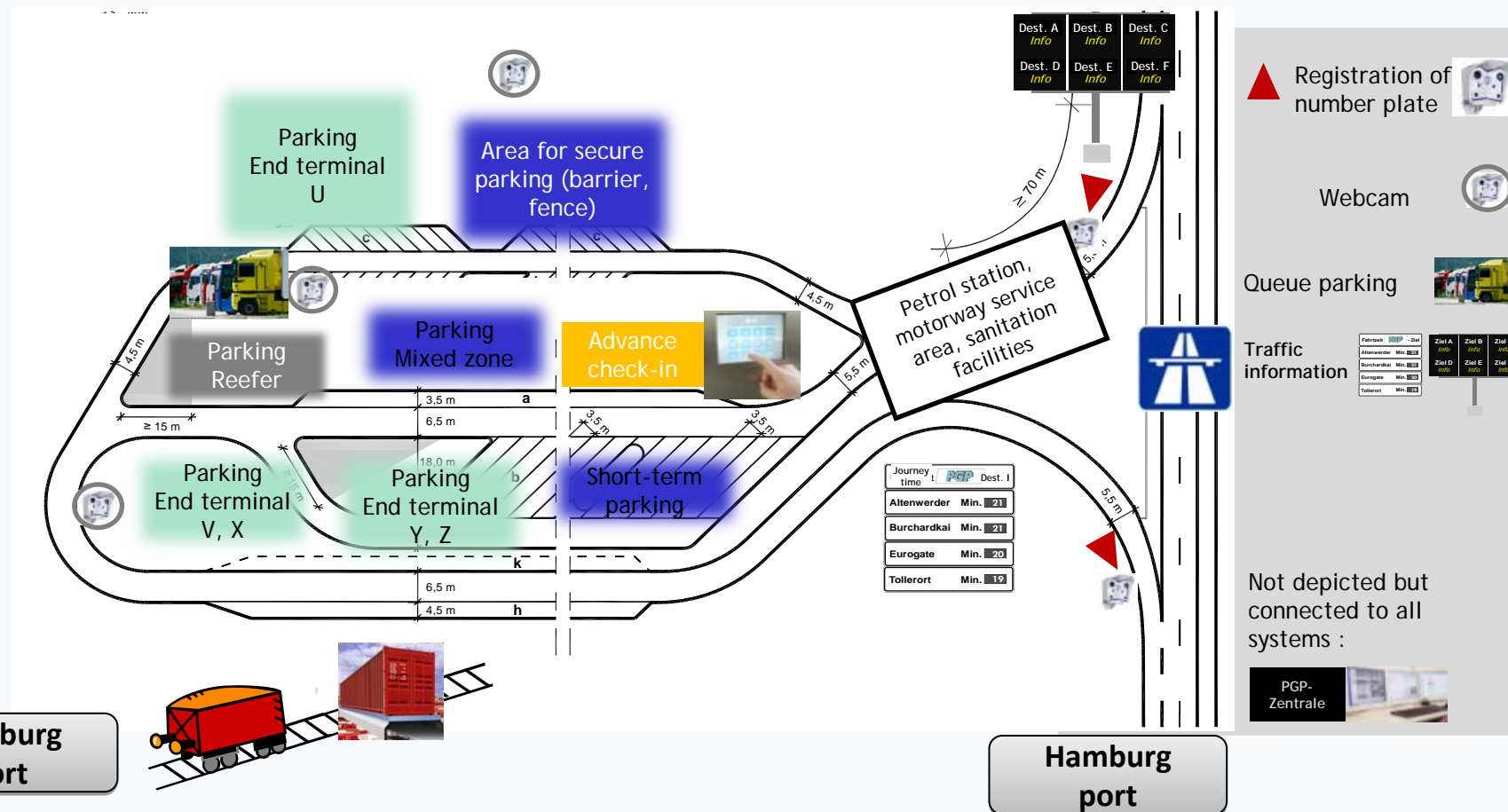
Feasibility



Project part-financed
by the European Union
(European Regional Development Fund)



Draft of PGP



Project part-financed
by the European Union
(European Regional Development Fund)



Baltic Sea Region
Programme 2007-2013



Towards an integrated transport system in the Baltic Sea Region





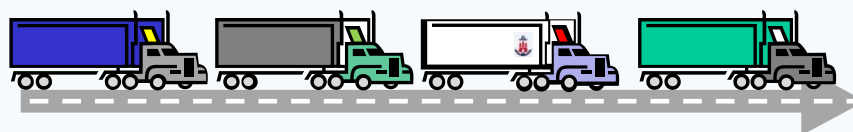
Next Step

1. Description of the pgp-system and its functionality
2. Detection of the adequate Location and available building area
3. Development of the operational and financing concept
4. Implementation of an Booking-System and interconnection with traffic information system
5. Development of the physical infrastructure
6. Start of the pilot project





Thank you for your Attention.



Contact

HPA Hamburg Port Authority AöR
Neuer Wandrahm 4
20457 Hamburg
www.hamburg-port-authority.de

Saskia Zippel
phone: +49 40 42847-3067
facsimile: +49 40 42847-2499
E-mail: saskia.zippel@hpa.hamburg.de



Project part-financed
by the European Union
(European Regional Development Fund)



Towards an integrated transport system in the Baltic Sea Region

