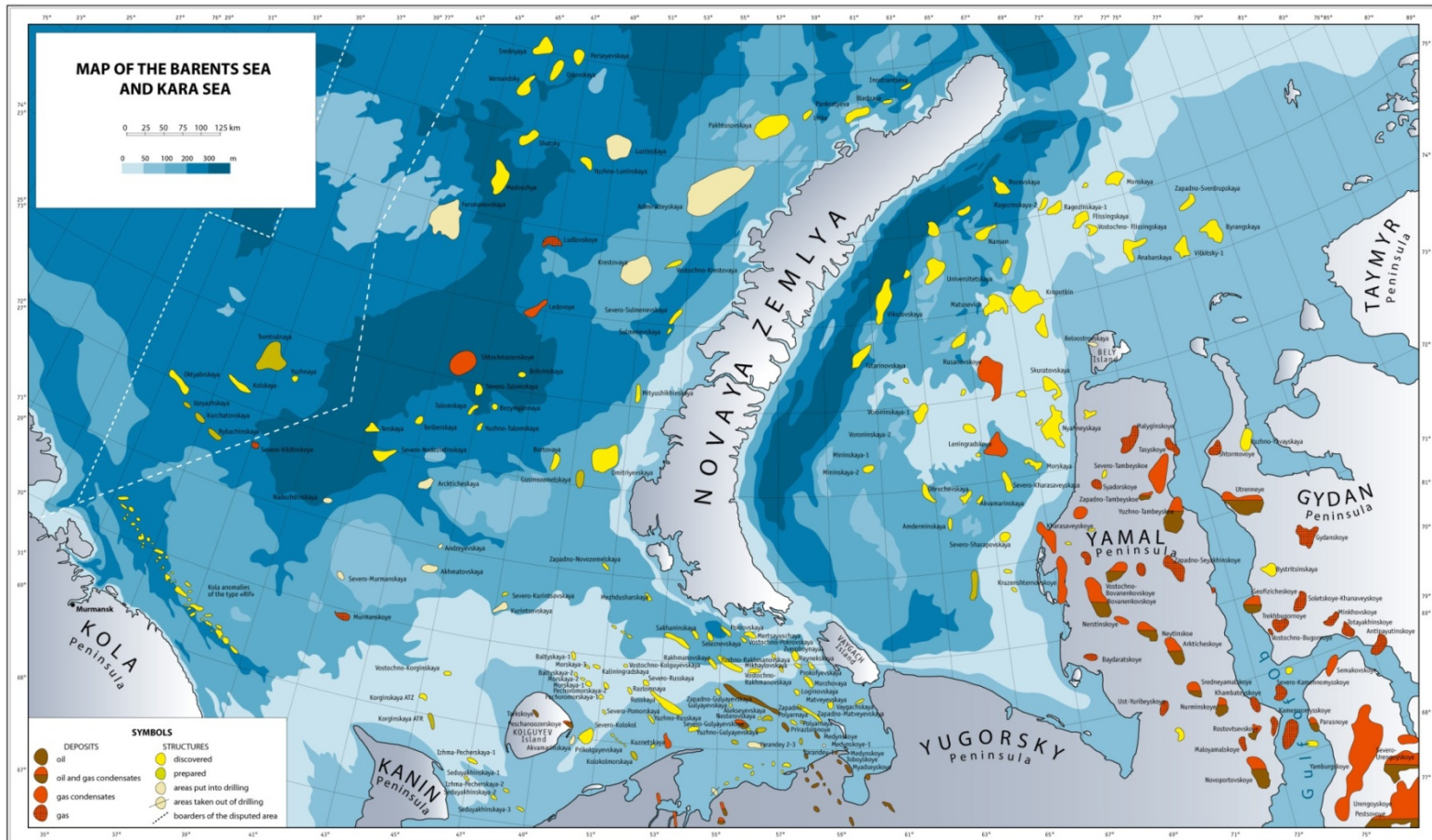
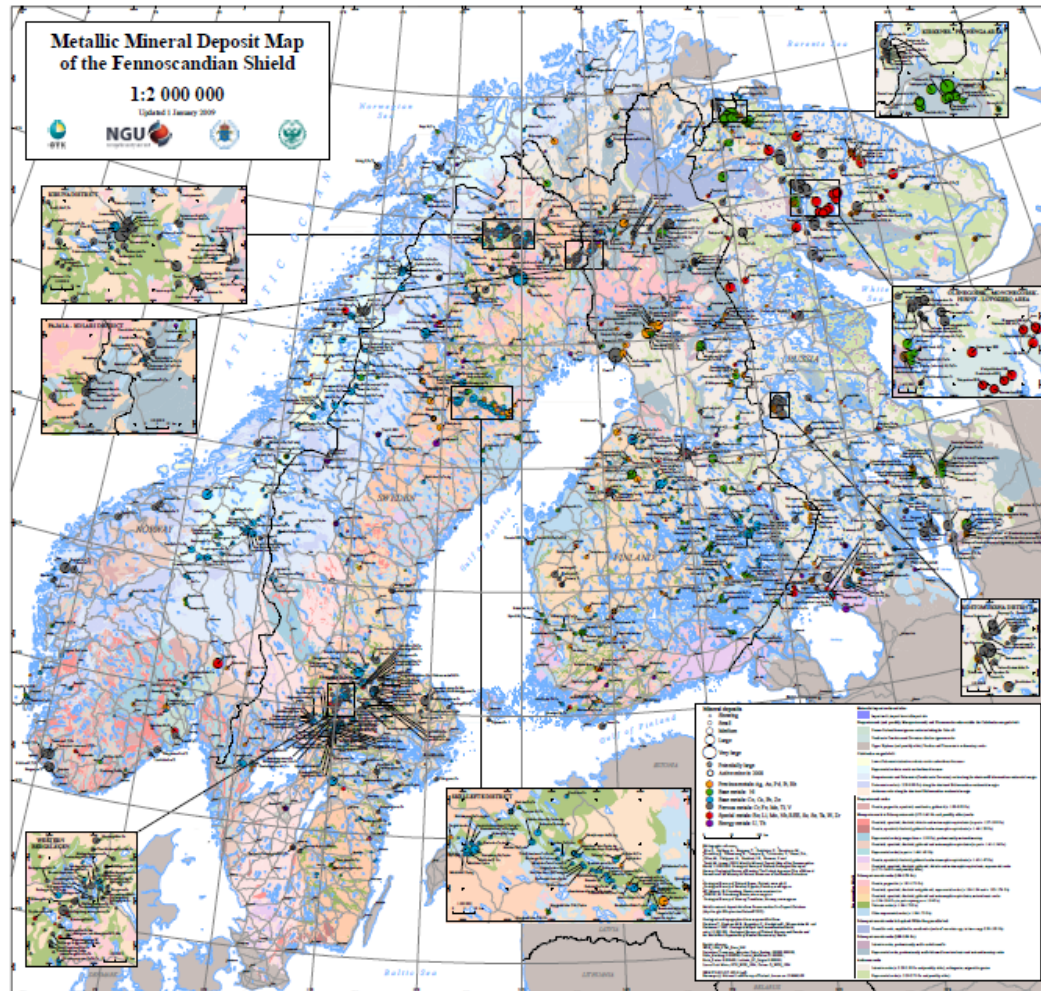




# Northern Dimension Partnership on Transport and Logistics

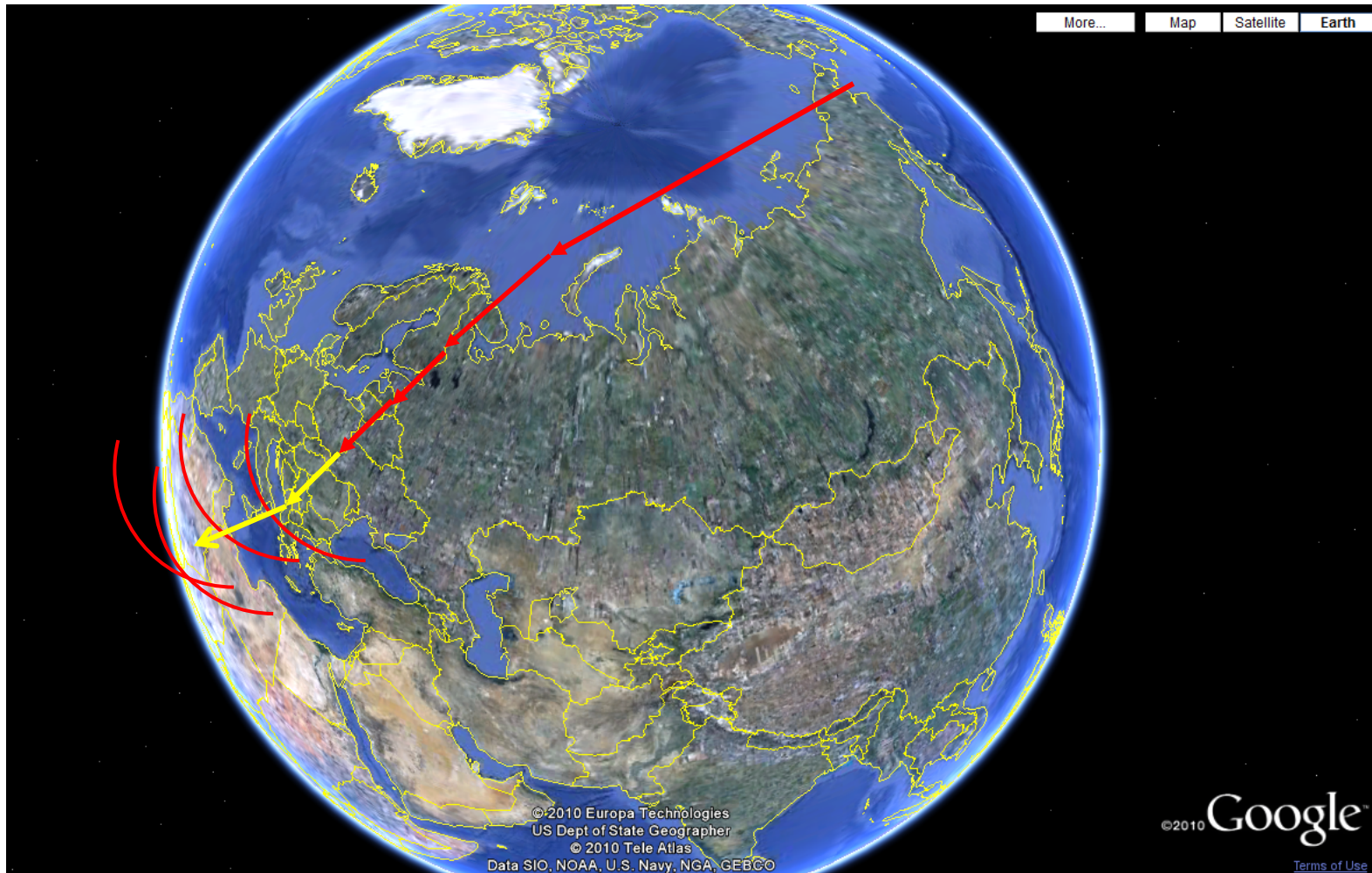
Oddgeir Danielsen



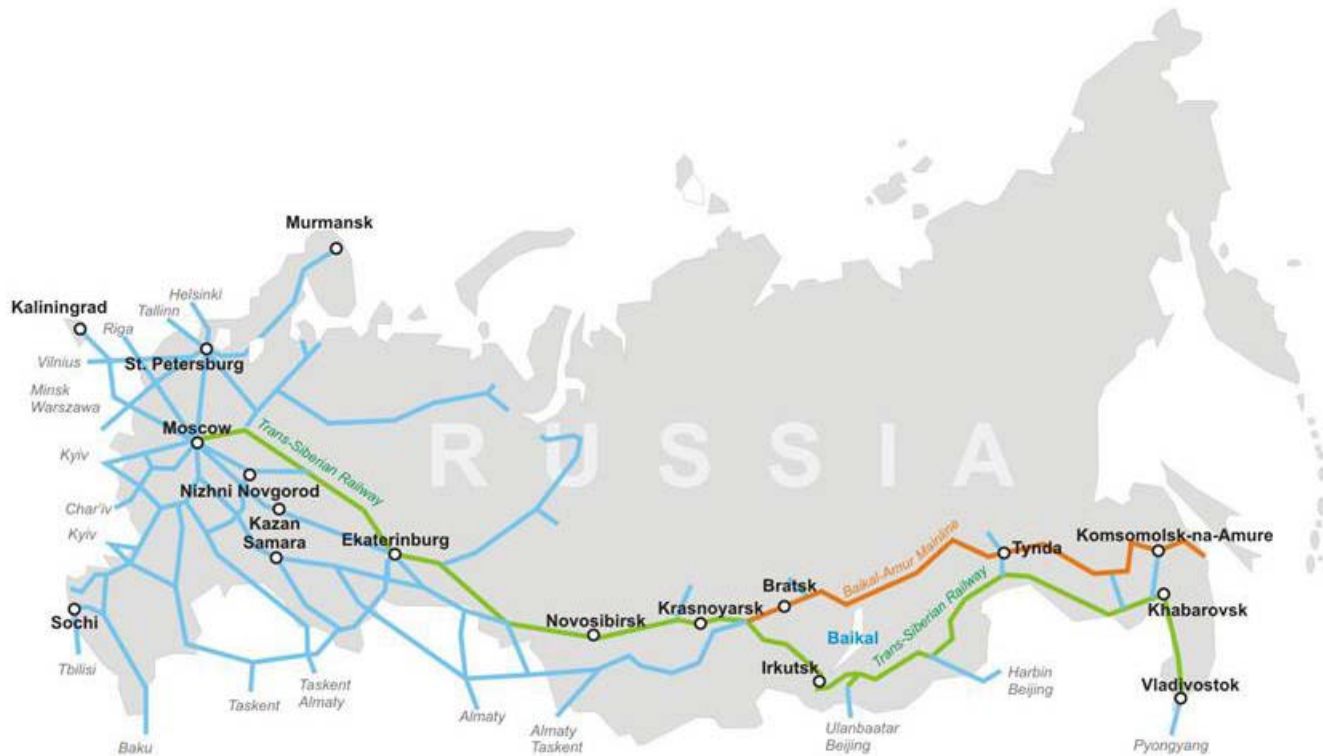




# The Northern Sea Route



# The Trans Siberian Railroad



11 time zones

85,500 km of track

More than 1 million employees

# Other Game Changers

---



# Environmental Friendly Transport?

---



Image: Tim Beach / FreeDigitalPhotos.net



Photo: The Norwegian Barents Secretariat

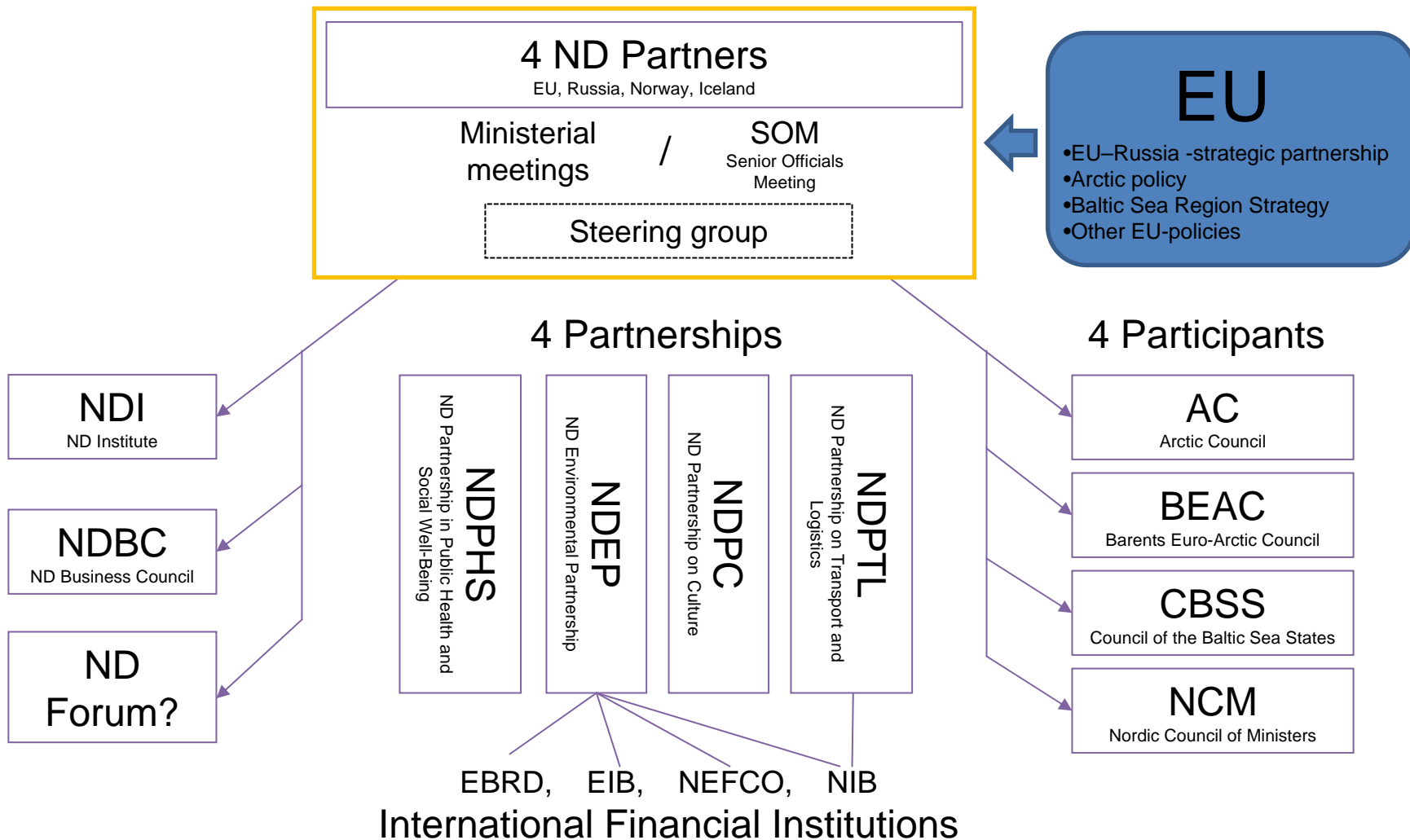


# The Northern Dimension Structure

Non-governmental level

Governmental Level

Participants





## NDPTL Partners

As suggested by the geographical scope of ND the Partnership is composed of:

- The northern EU member states: SE, FIN, EE, LV, LT, PL, DE, DK;
- Non EU countries: NO, RU, BY;
- European Commission

# Objectives of the Partnership

---

The Partnership is to:

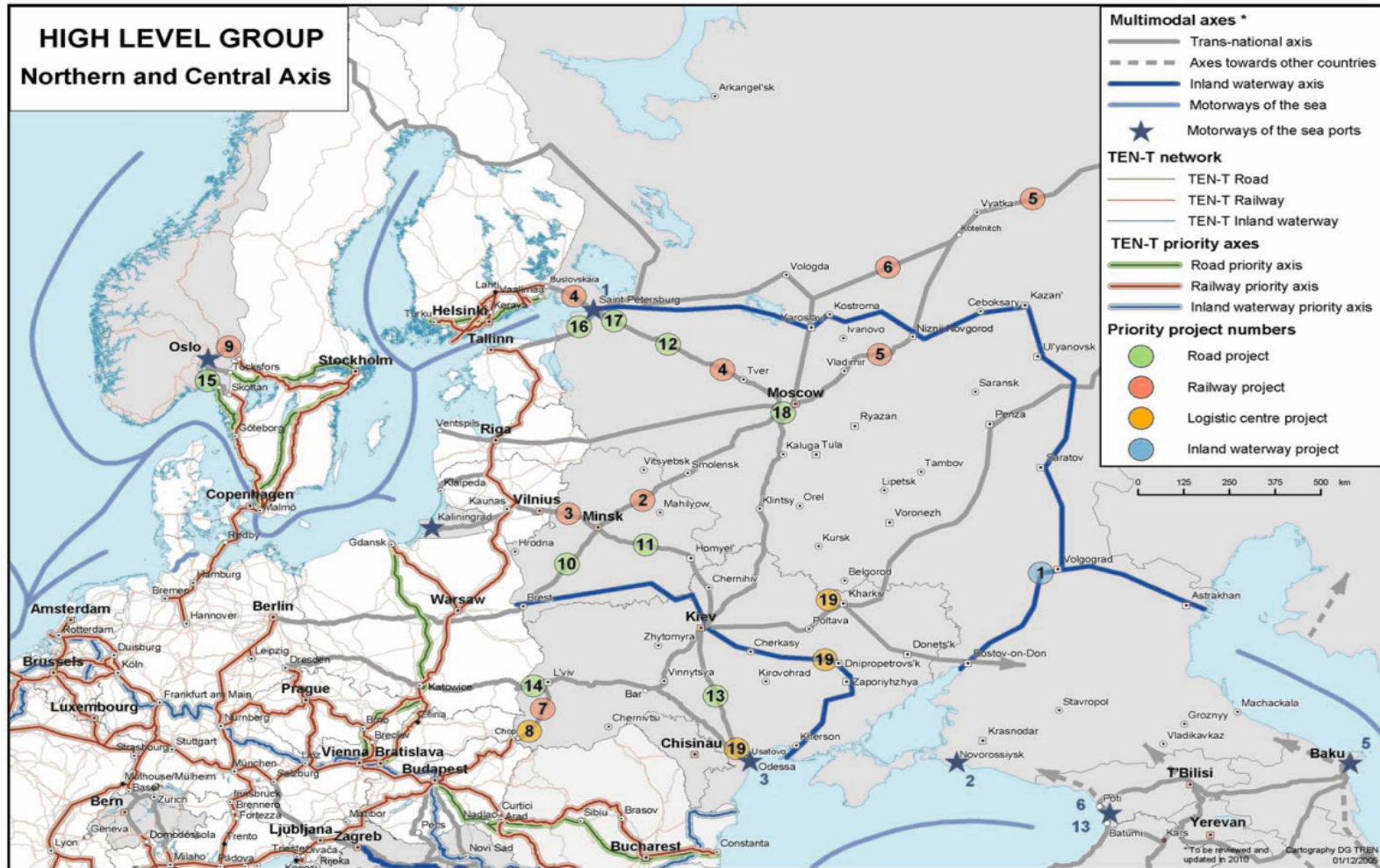
- To improve the major transport connections between the ND Partners;
- Accelerate the implementation of transport or logistics infrastructure projects;
- Accelerate the removal of non-infrastructure related bottlenecks;
- Set up effective structure to monitor the implementation of projects and measures, to identify new bottlenecks.

# Institutional set up

---

- High Level Group – strategic decisions on the future development and priorities of the Partnership;
- Steering Committee – monitoring the implementation of the Partnership, plans development;
- Secretariat – a working body to facilitate the work of the Partnership.  
-Operational as of FEB 2011

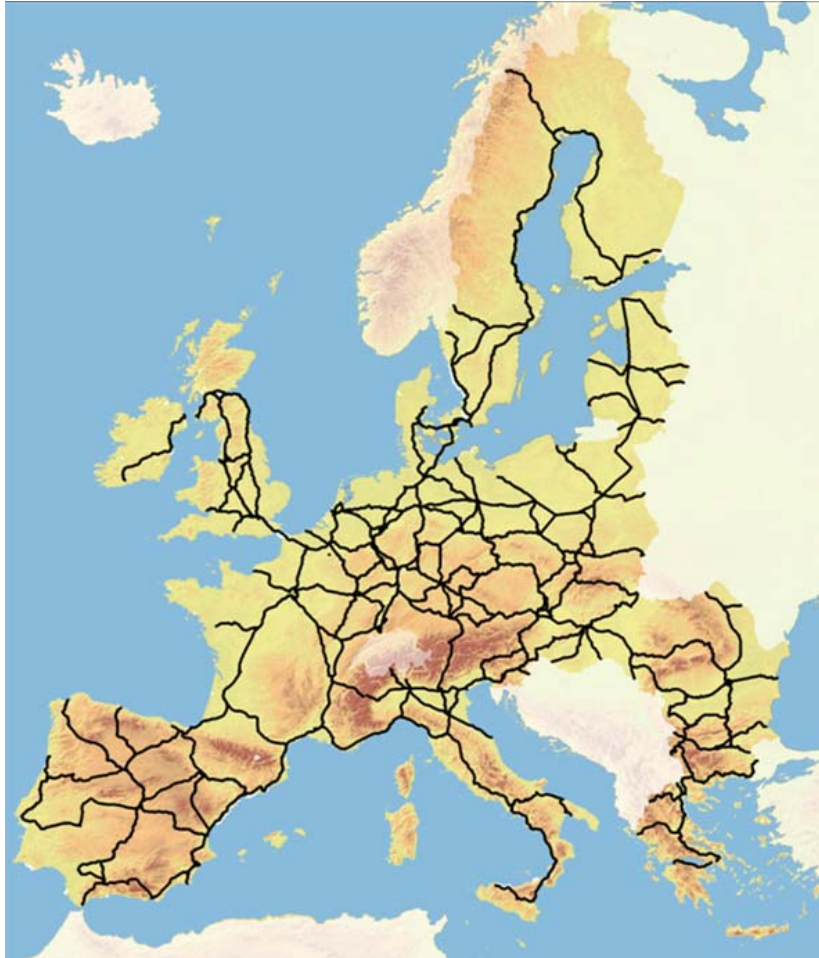
# Northern Axis





# Suggested Ten-T Core network

---



## Схема Белорусской железной дороги

