



αρχή λιμενών κυπρού
cyprus ports authority

The Motorways of the Sea and its Importance for Cyprus Ports

Panayiotis Agathocleous
Administrative Officer
CYPRUS *PORTS* AUTHORITY

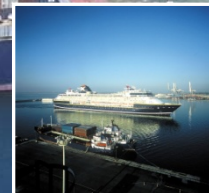
Transbaltic Conference
Paphos, Cyprus

5 September 2012





- **Cyprus Ports Authority (CPA)** is a public autonomous organization responsible for the development, management and operation of the ports of the country.
- The Authority provides both commercial and public port services.
- The Authority's strategic aims are to establish Cyprus ports as competitive cargo and cruise traffic centres.



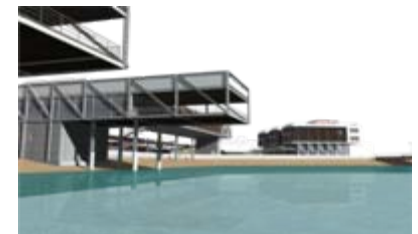
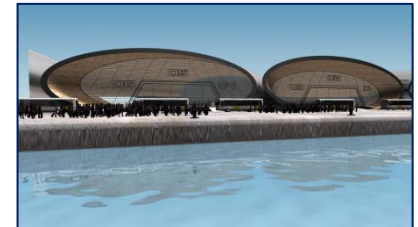


- Sea borne traffic is served by a highly integrated port system composed of:
 - the multipurpose ports of Limassol and Larnaka
 - the industrial terminal of Vasiliko
 - the specialised oil terminals at Larnaka, Dhekelia, Vasiliko and Moni.
- Due to the Turkish occupation the ports of Famagusta, Kyrenia and Karavostasi are declared as closed ports.





- CPA has always given priority to the creation of infrastructure and superstructure to respond to technological changes in shipping and new requirements of commerce.
- €80 millions **development plan** with €25 millions from EU funding for some of the projects. This plan includes:
 - Dredging of Limassol port basin and turning circle to -16m and -17m (completed)
 - Expansion of Limassol port's quay by 500m
 - New passenger terminal
 - Purchase of new gantry cranes and a tug boat
 - Redevelopment of Old Limassol Port
 - Redevelopment of Larnaca port and marina





Turkish Restrictive Measures

- Turkish restrictive measures are illegally applied since 1987 to Cyprus flag vessels calling at Turkish ports. Since 1997 these measures were extended to all ships, irrespective of flag, which have a connection with Cyprus.
- Shipping lines, mainly of EU interests, which were using Cyprus ports were obliged to abandon Cyprus or changed their schedules.
- These changes were by and large, a direct consequence of the Turkish measures rather than the result of economic considerations

Motorways of the Sea

- Maritime transport has always been the dominant support of Europe's trade and between EU and its trading partners.
- Motorways of the Sea a priority project of the TEN-T, is an ambitious initiative representing a cost-effective, energy-efficient and climate-friendly alternative to extending motorway networks on land.
- Motorways of the Sea is one of the key concepts in the Freight Transport Logistics chain, which contributes to a lasting restructuring of long distance freight transport in Europe.





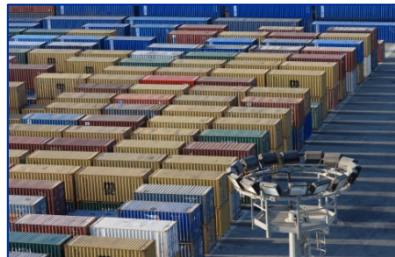
East Mediterranean and Motorways of the Sea

- The East Mediterranean region is an active sea trading region and constitutes EU's Eastern frontier in the middle of 3 continents.
- More efficient transport in the East Mediterranean will help countries to attract foreign direct investment, encourage exports, facilitate regional integration and allow countries of North Africa and Middle East to more effectively 'plug into' the European Single Market.
- Because of the geopolitical situation, maritime transport in this region is the only alternative. The existence of an efficient maritime transport network in the East Mediterranean, as a vehicle of economic growth and prosperity is of paramount importance.



Ports and Motorways of the Sea

- Ports act as nodal points for logistical transport chains and intermodal transport, integrate land transport infrastructure, maritime transport and any other land transport mode.
- Ports are the connecting infrastructure for Motorways of the Sea.
- A Motorway of the Sea needs to feature the best available treatment, not only in terms of infrastructure and connections, but also in terms of cost-efficient port services to the ship, its cargo and its clients.





Cyprus Ports Authority and Motorways of the Sea

- Cyprus, an island economy, with 70% of its trade and direct shipping links with EU member states or countries in the geography of Europe, the concept of Motorways of the Sea is very important.
- Cyprus depends entirely on its ports for its trade, thus the development and improvement of port infrastructures and the establishment of an efficient transport system is high on the agenda of the Cyprus Ports Authority.
- Cyprus Ports Authority has always given priority to the creation of infrastructure and superstructure to respond to technological changes in shipping and to modern requirements of commerce.



East Mediterranean, Cyprus and shipping connectivity

- Shipping connectivity amongst countries in the East Mediterranean region has been adversely affected in recent years.
- Ro-Pax traffic, a severely lacking service in our region, is of special interest for Cyprus and we look forward to the return of these services that serve cargo and passengers in combination.
- We welcome the recognition under Motorways of the Sea, of the importance of co-financing infrastructure measures to improve primarily accessibility between outlining and island regions and central market areas.



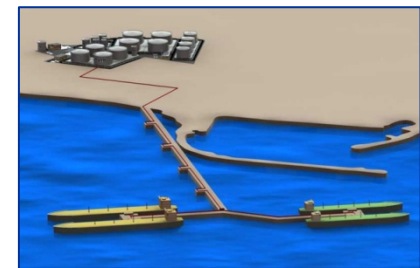
CPA's projects which are co-financed by the TEN-T

- CPA together with partners from Greece, Italy, Slovenia and Malta participated in the project/study *"Elaboration of the East Mediterranean Motorways of the Sea Master Plan"*, which was co-financed by the TEN-T with 2 million euros.
- The main aims of the study were:
 - to identified the parameters of the Master Plan for the development of the Motorways of the Sea concept in the East Med region
 - to provide information to stakeholders that will assist them to submit to EU Funding Instruments for co-financing, proposals that enhance the maritime links in the region and in general meet the scopes of the Motorways of the Sea policy.



CPA's projects which are co-financed by the TEN-T

- CPA with the co-financed assistance of the TEN-T (470.000 euros) is implementing the project *"Cyprus Ports Master Plan"* which comprises:
 - a study for determining the best use of the resources and installations of the Cypriot ports,
 - a feasibility study with the aim to explore and evaluate the capability of the Vasiliko industrial terminal to handle dangerous cargoes as well as oil products, and
 - a feasibility study for extending Limassol Port and its quay.



CPA's projects which are co-financed by the TEN-T

- CPA participates in the *'MIELE' project* together with Italy, Portugal, Spain and Germany, a project which is also co-financed by the TEN-T with an amount of nearly 8 million euros.
- The aim of the project are to design and develop a pre-deployment pilot for an interoperable ICT platform (the "MIELE Middleware") able to interface ICT systems such as single windows and port community systems.



Cyprus role and network coherence within EU and neighbours

- Cyprus can play an important role towards achieving a network coherence within the EU and especially with Europe's neighbouring countries.
- Cyprus can also play the role that its geographical position entails, that of a connecting bridge between Europe, Asia and the Middle East,
 - for trading and sea transport purposes, and
 - acting as a mediator of peace between the EU and the Middle East and North African countries.





Αρχή Λιμένων Κύπρου

Κρήτης 23, CY-1061, Λευκωσία
Τ.Θ. 22007, CY-1516, Λευκωσία
Κύπρος

Τηλ: +357 22 817200

Φαξ: +357 22 765420

E-mail: cpa@cpa.gov.cy

URL: www.cpa.gov.cy

Cyprus Ports Authority

23 Crete Street, CY-1061, Lefkosia
P.O. Box 22007, CY-1516, Lefkosia
Cyprus

Tel: +357 22 817200

Fax: +357 22 765420

Thank you

